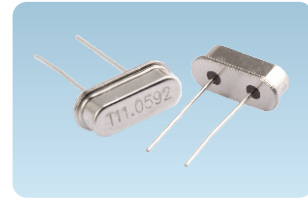


RoHS compliance

TXI.TXJ Type



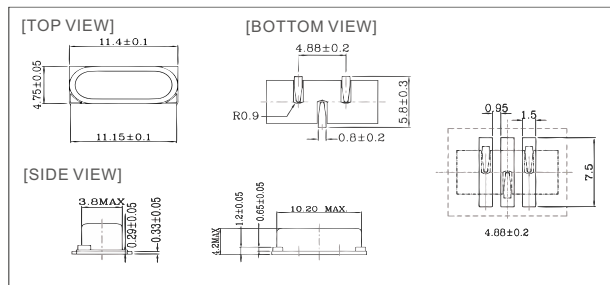
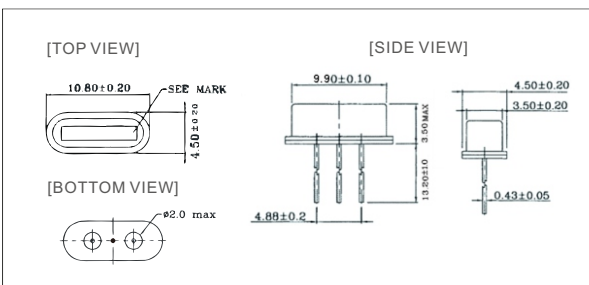
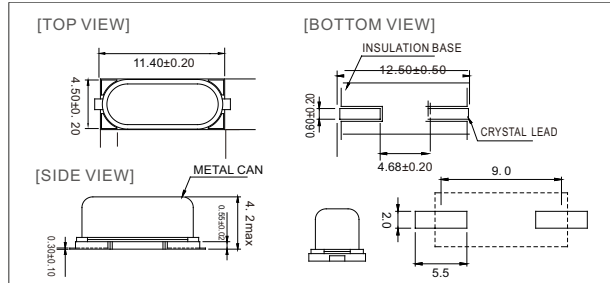
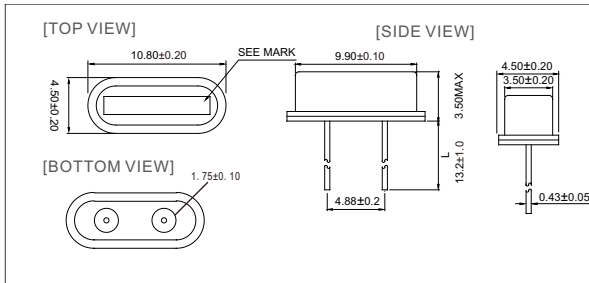
Feature

- Capable of operating over a wide temperature range.
- Offers a high degree of reliability due to excellent shock and vibration resistance, as well as excellent frequency stability.
- SMD version is suitable for automatic mounting and reflow soldering.
- AEC-Q200 Compliant

Specifications

Item	Type	TXI.TXJ-Type			
Frequency Range		3.2~80MHz			
Oscillator Mode		Fundamental;3rd overtone			
Frequency Tolerance		$\pm 10 \times 10^{-6}, \pm 20 \times 10^{-6}, \pm 30 \times 10^{-6}$ (at 25°C)			
Operating Temperature Range		-10~+60°C, -20~+70°C, -40~+85°C			
Load Capacitance		8pF to Series			
Storage Temperature Range		-55~+125°C			
Drive Level		10μW(800μW max.)			
Equivalent Series Resistance	Frequency Range (MHz)	Equivalent Series Resistance max [Ω]	Frequency Range (MHz)	Equivalent Series Resistance max [Ω]	
	3.2~4.0	140	16.0~20.0	30	
	4.0~5.0	120	20.0~30.0	25	
	5.0~7.0	80	30.0~36.0	25	
	7.0~9.0	45	30.0~36.0	(A3)80	
	9.0~13.0	40	36.0~80.0	(A3)80	
13.0~16.0	35				

Outline Drawing(mm)

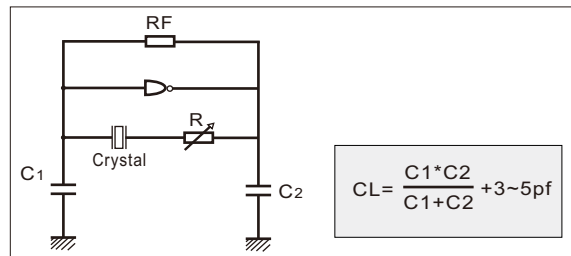


Frequency Stability Vs. Temperature Range

Temp.(°C)	Ppm	±5	±10	±15	±20
-10 ~ +60		×	✓	✓	✓
-20 ~ +70		×	+	✓	✓
-40 ~ +85		×	×	×	✓

✓ Available + Conditional × Not Available

Oscillation Circuit of Fundamental Mode



Q.C PASS

T1903A